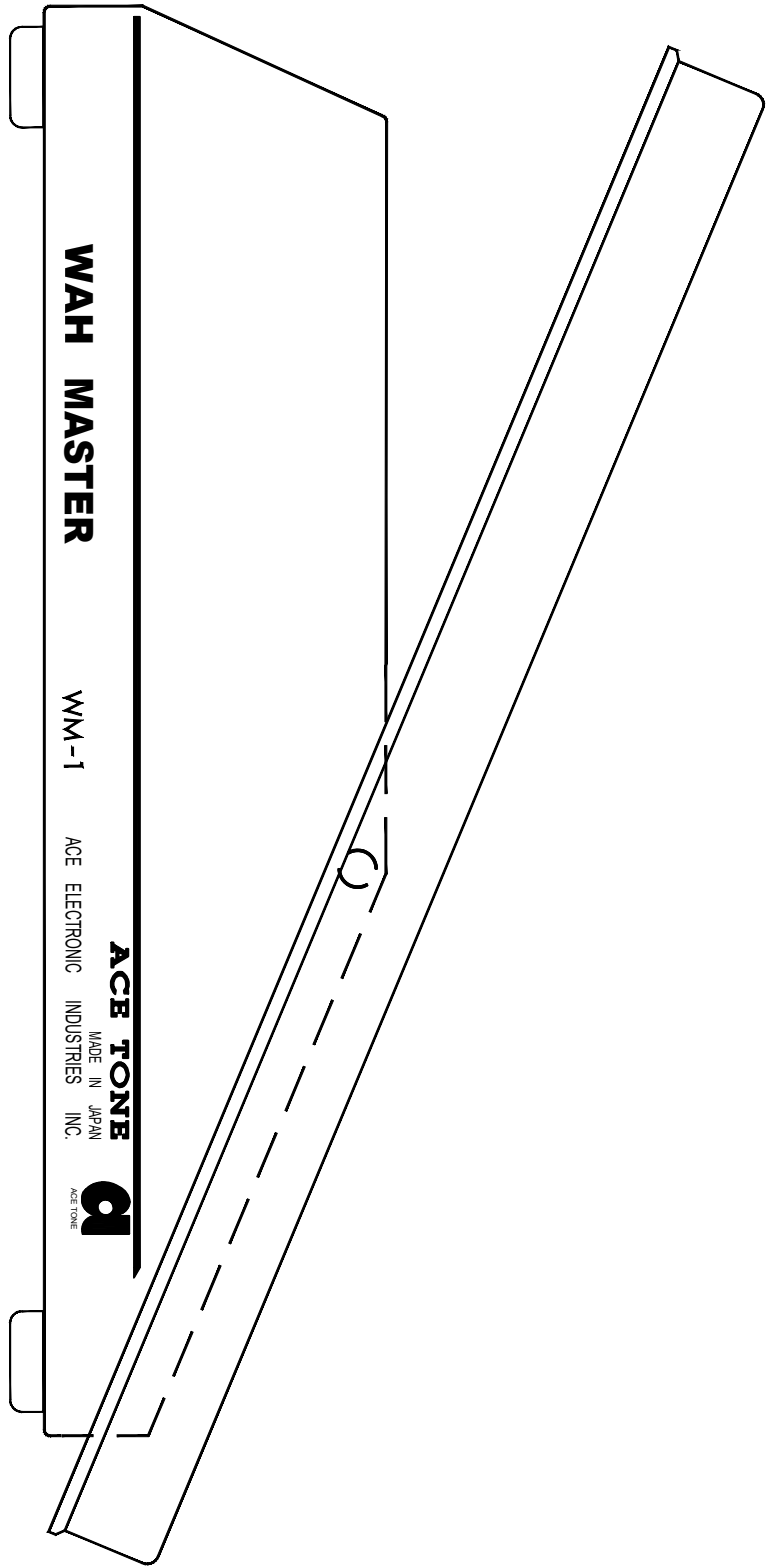
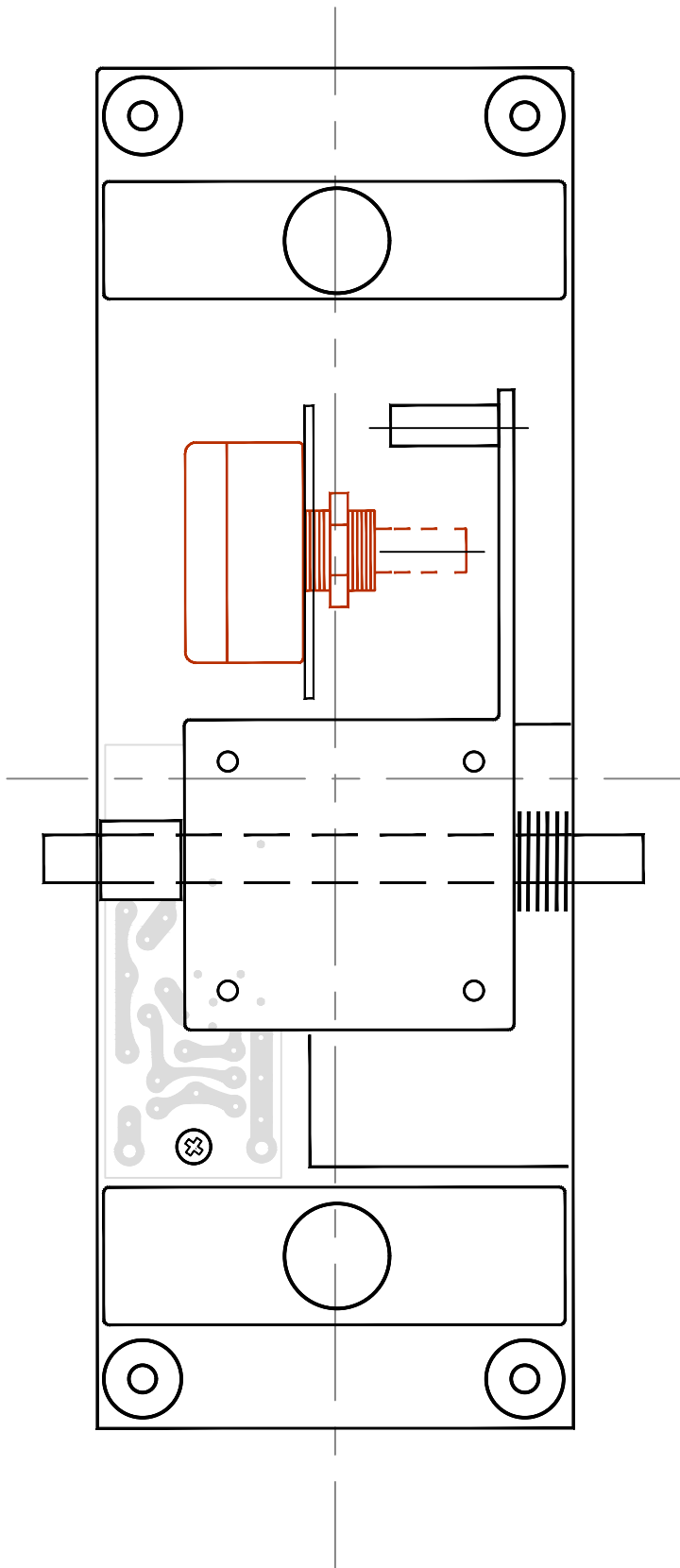


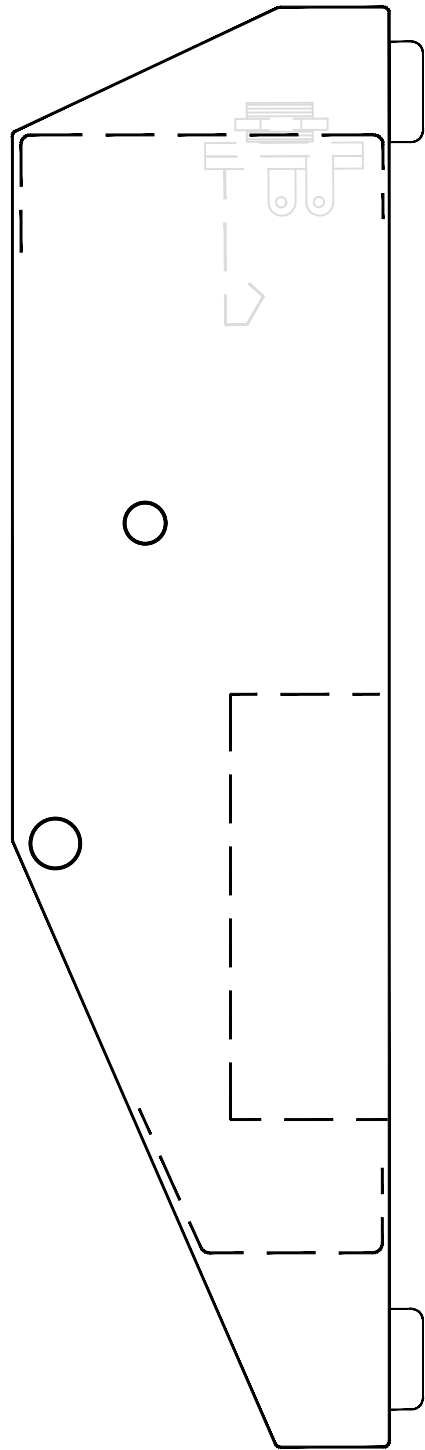
TOP VIEW



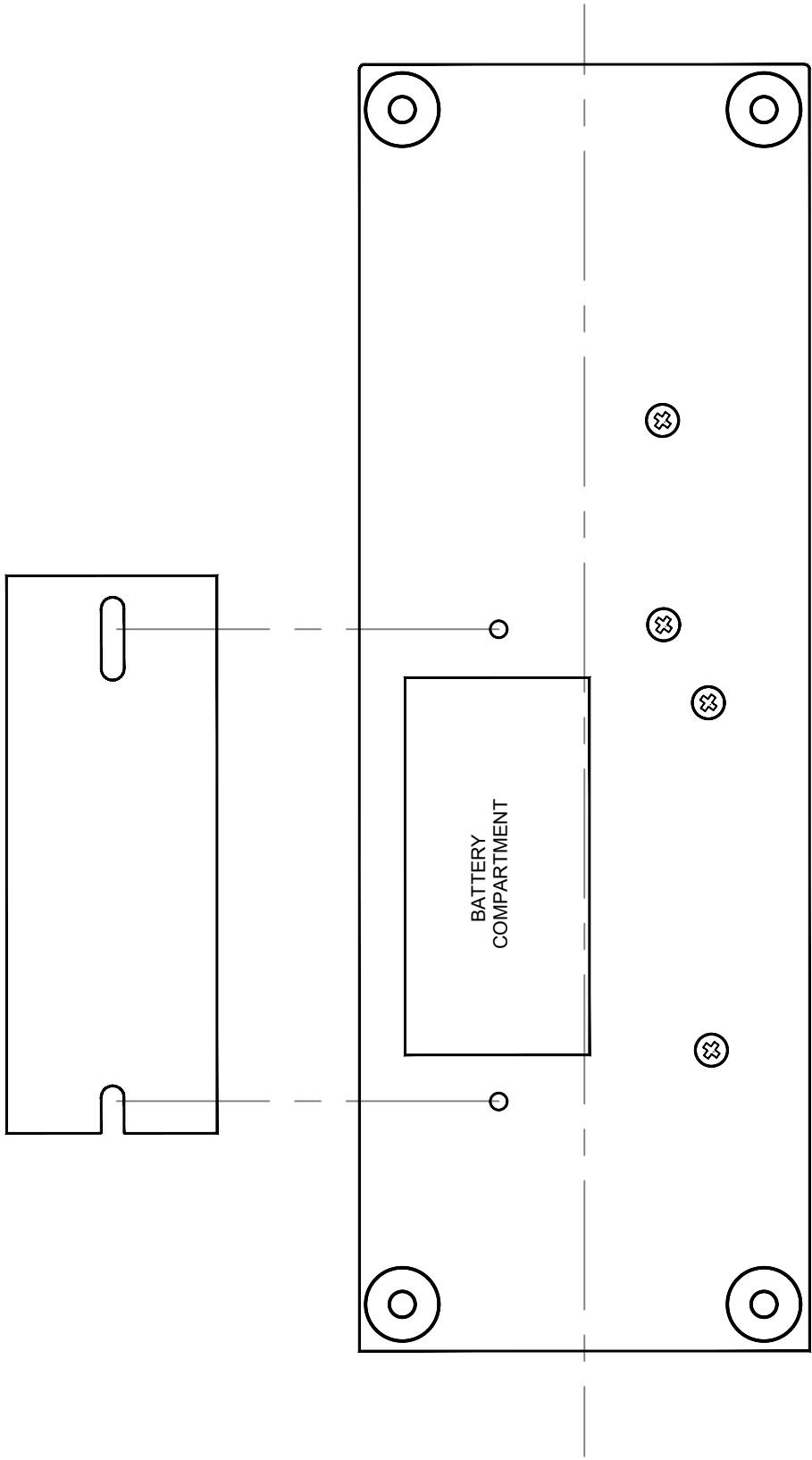
LEFT SIDE VIEW



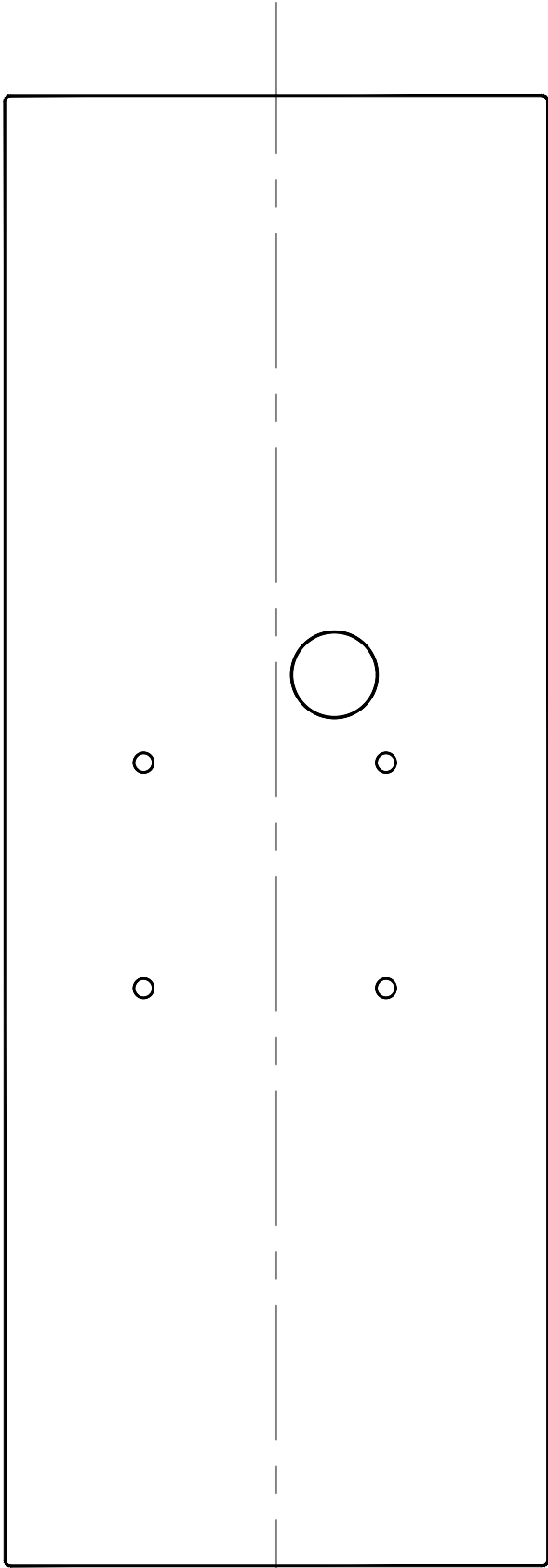
SHELL, TOP VIEW



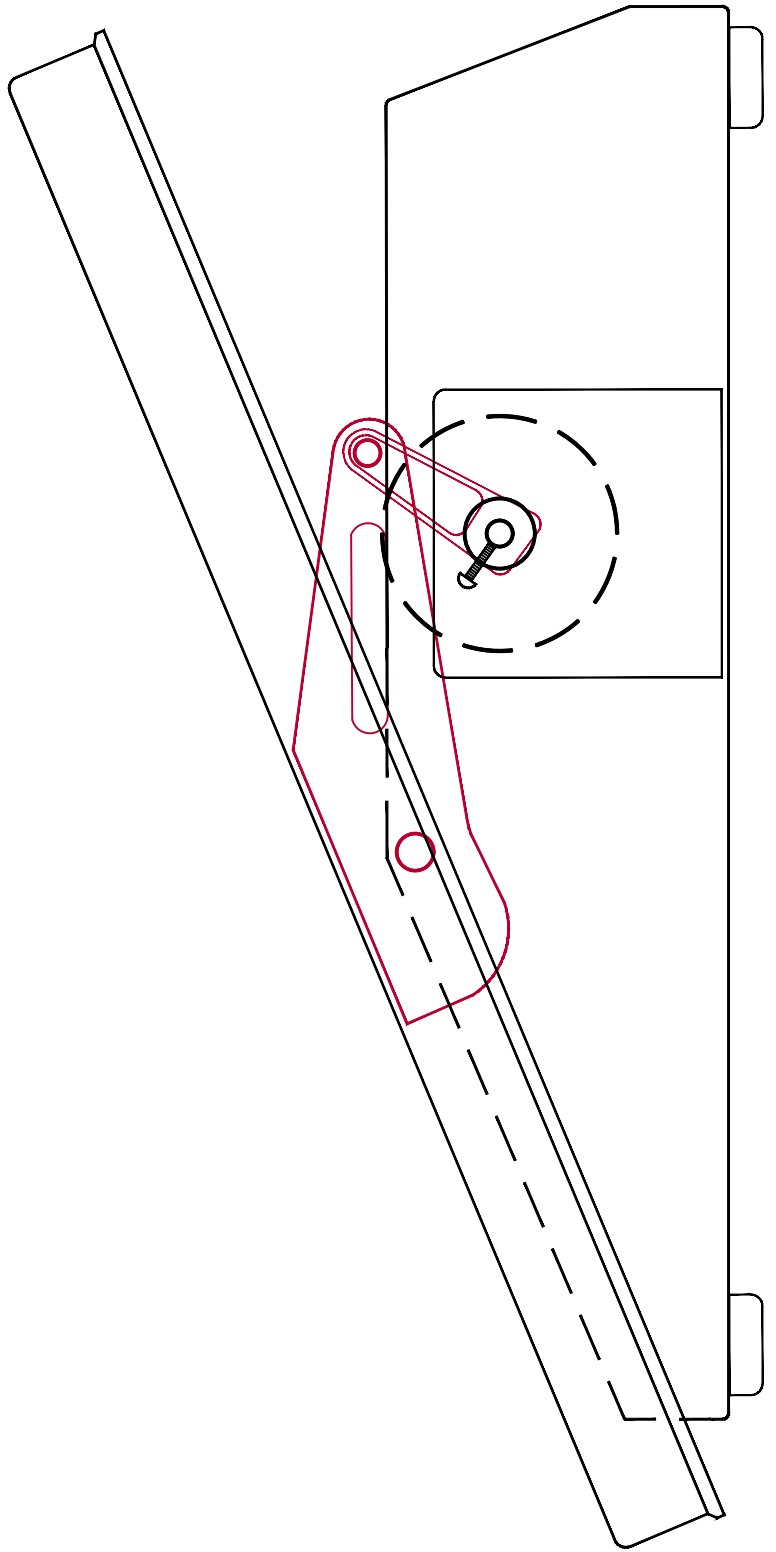
SHELL, LEFT SIDE VIEW



SHELL, BOTTOM VIEW



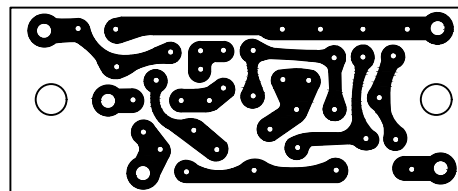
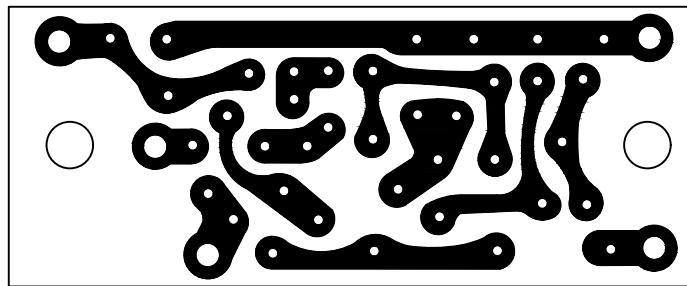
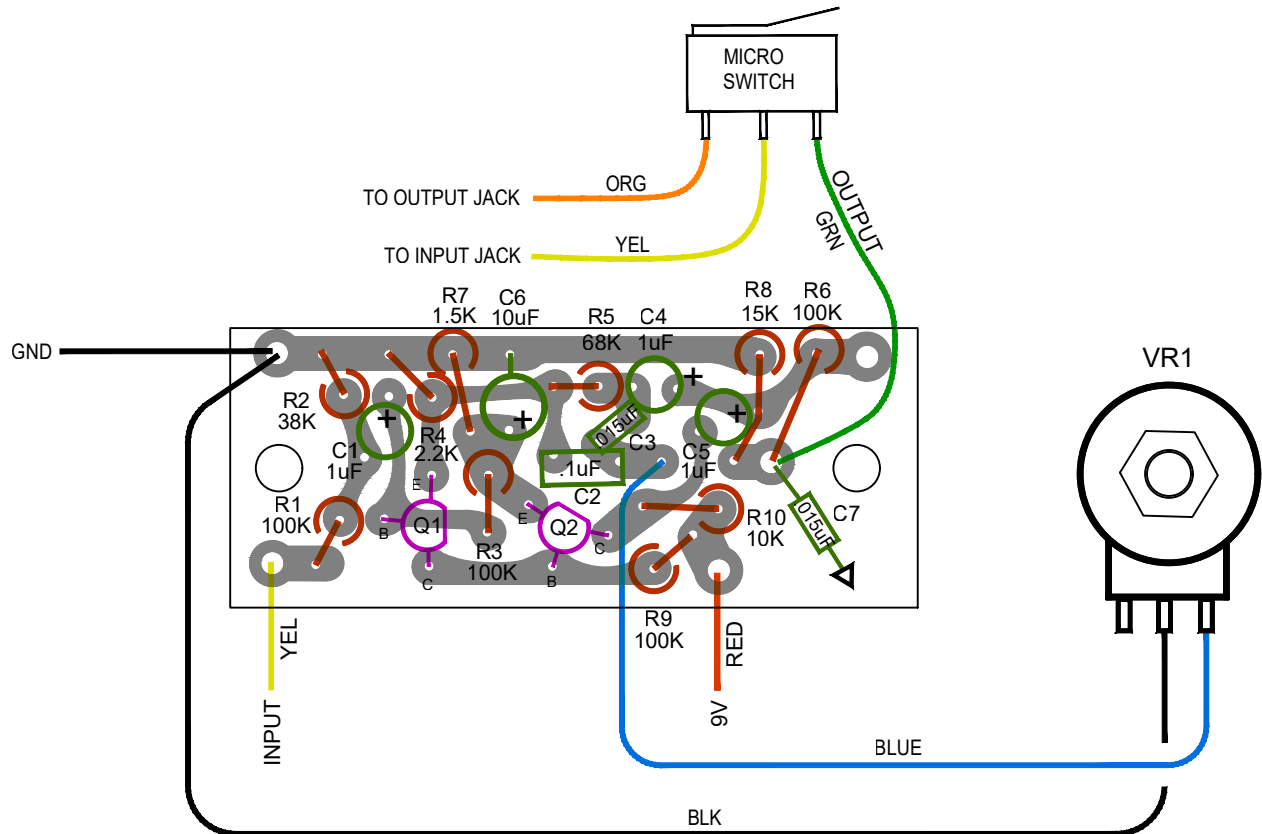
TREADLE, TOP VIEW



RIGHT SIDE VIEW

NOTES:

1. TRANSISTORS MARKED "CDC1300" AND ARE NPN TYPE, TO-106 PACKAGE (EQUIVALENT TO 2N2222 OR BC547)
2. POT IS A 10K RV30YN-2J "COSMOS", MADE IN TOKYO JAPAN
3. C7 IS MOUNTED ON FOIL SIDE OF PCB
4. YELLOW WIRES CONNECTED TOGETHER AT PCB



APPROX. ACTUAL SIZE

## Ace Tone "Wah Master" WM-1 PCB

Drawn by Paul Marossy 3/19/2024